

# “Chair-side” remaking of incongruous prosthesis

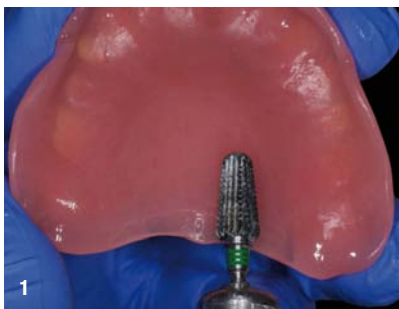
With soft relining materials



DR. THEODOROS TASOPOULOS  
private dental practice in Athens

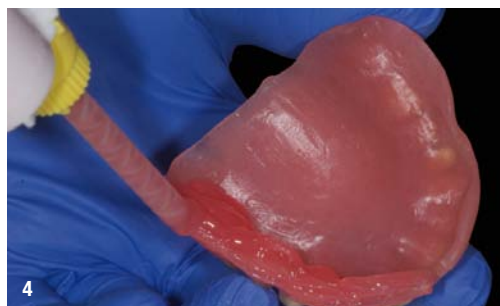
Sofreliner Tough S (Soft)/M (Medium) by Tokuyama is indicated as a long term auto-polymerized denture soft lining material for post implant and post extractive applications. It may constitute as a useful treatment option offering direct and easy reproduction of the oral tissues in the denture base, avoiding the temporary edentulous period accompanying laboratory relines.

In this case, the patient (male, 65 years old, bruxer) was presented in our private clinic complaining of poor-fitting maxillary denture and associated pain and discomfort. Furthermore, the patient was complaining about speech difficulties, poor mastication and traumatized tissue bearing surface of the maxilla.



**Fig. 1** Approximately, 1-2 mm of acrylic resin was removed from the surface of the denture base.

**Fig. 2** Denture flanges were grinded down with a shoulder preparation (900). The prosthesis was carefully cleaned using ethyl alcohol and was allowed to dry.



**Fig. 3** A thin coat of adhesive primer\* was applied to the impression surface and peripheral borders of the denture with a clean dry brush. It was allowed to dry for at least 1 minute.

**Fig. 4** Tokuyama Sofreliner Tough M/S paste dispensed directly onto the bonding surface of the denture. The working time is 1,5-2 minutes, at room temperature of 230C (730F).



**Fig. 5** Denture was seated intraorally and was retained for at least 5 minutes (setting time) in occlusion. In order to bold the border of the vestibule area, movements of cheeks and lips were performed in patient's mouth.



**Fig. 6** Using a scalpel excess material was removed.



**Fig. 7** Using the COARSE POINT with rotational speed of less than 15,000 RPM excess of Tokuyama Sofreliner Tough M/S was trimmed.



**Fig. 8** In order to achieve a smoother finish the denture surface was polished with the FINISHING WHEEL by applying light pressure not to exceed 8,000 RPM.



**Fig. 9** The denture was successfully relined and delivered to the patient.



*\* Sofreliner Tough S primer usage detail.*