



DR. GIANLUCA PLOTINO
private dental practice in Rome

Cementing of disilicate inlay

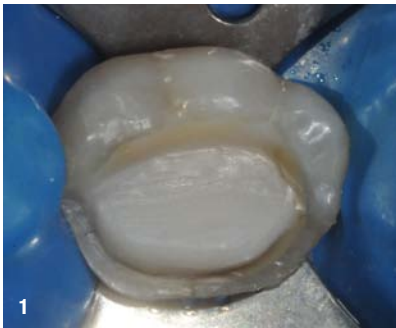


Fig. 1 Cavity prepared and isolated for cementing.



Fig. 2 Test for lithium disilicate inlay.



Fig. 3 Estelink bond to be applied in the cavity.

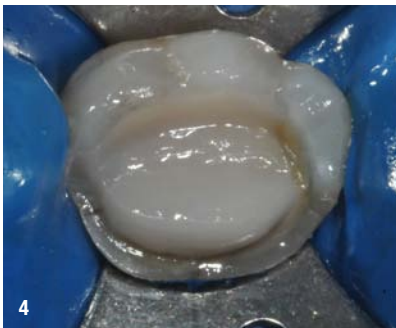


Fig. 4 Cavity after the bonding steps.



Fig. 5 Universal primer to be applied on the inlay to be cemented.



Fig. 6 Estecem Universal applied in the cavity.



Fig. 7 Estecem Universal applied on the inlay to be cemented.



Fig. 8 The inlay cementing steps.



Fig. 9 The inlay shortly after the cementing (dental technician Fabrizio Loreti).